

**FURUNO**

## FISH FINDER

Model

**FCV-1900**

*See underwater **clearly and accurately**  
with incredible high definition echoes*

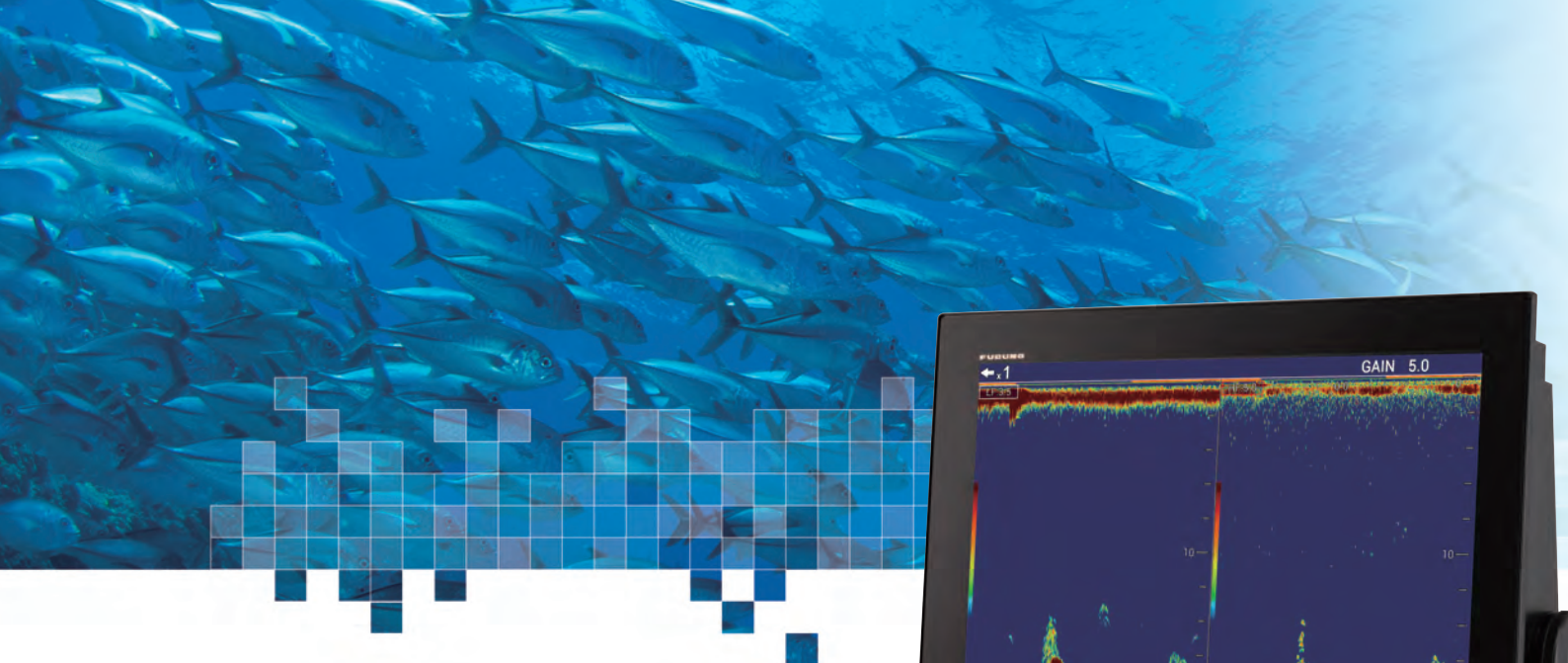


Photo: 19" Marine Display MU-192HD  
(Optional supply)



[www.furuno.com](http://www.furuno.com)



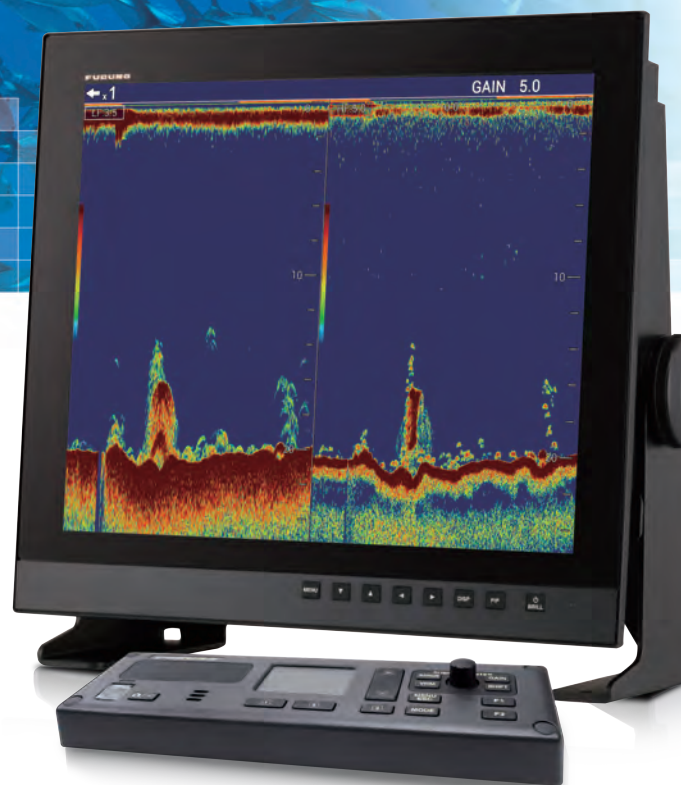


## FISH FINDER

Model

# FCV-1900

Photo: 19" Marine Display MU-192HD  
(Marine Display and Hanger are optional supply)

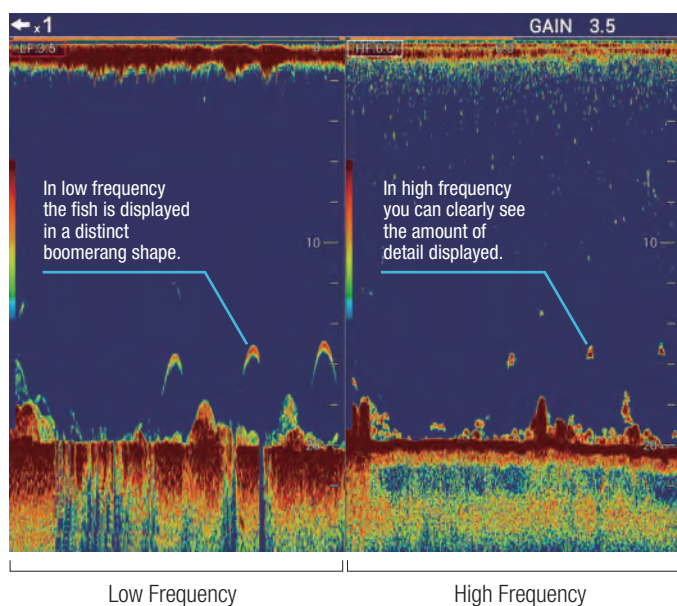


## Increased transmission rate for more details

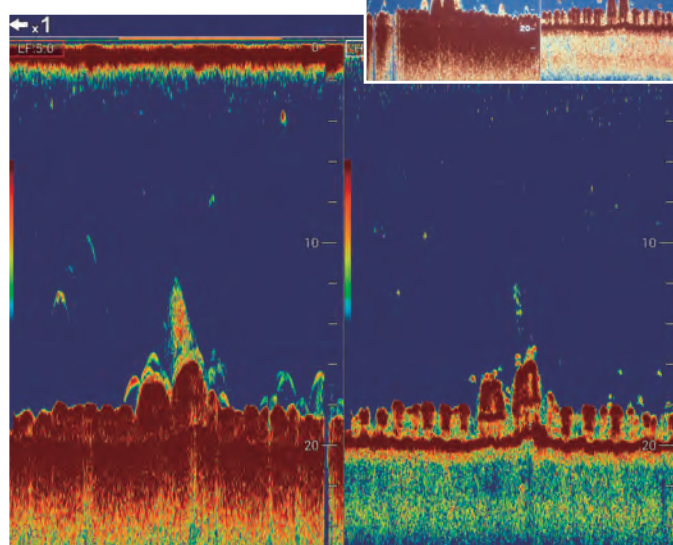
With a transmission rate that has been increased by up to 1.4 times (at 200 m range), FCV-1900 ensures excellent target separation and clarity.

Same scene captured with previous model

### Individual fish



### Artificial reefs



See artificial reefs in greater detail

► You can find more information and media by searching for FCV-1900 on [FURUNO.com](http://FURUNO.com)

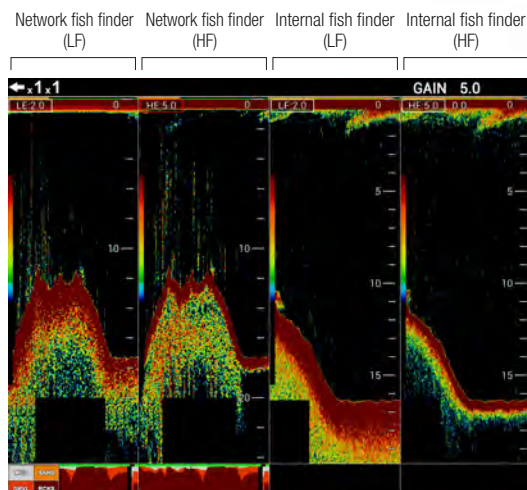
FCV-1900



# Functions for improved efficiency

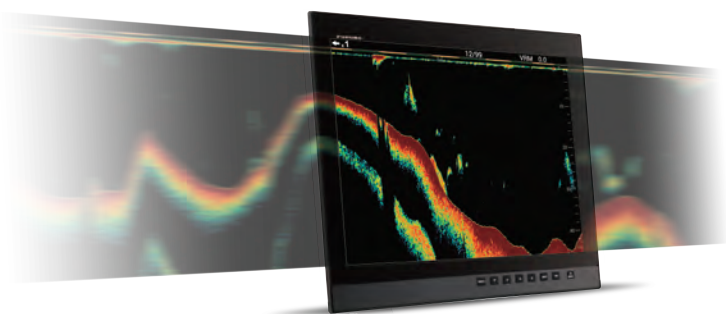
## Display up to four different frequencies

Display up to four different frequencies together in a compact and easy way by connecting a required network fish finder. Since there is no need to install additional displays, this system is especially useful



## Scroll back function

With the press of a button you can activate the scroll back function to instantly review past echoes. Up to two previous screens can be viewed.



## Capture and review videos and screenshots\*

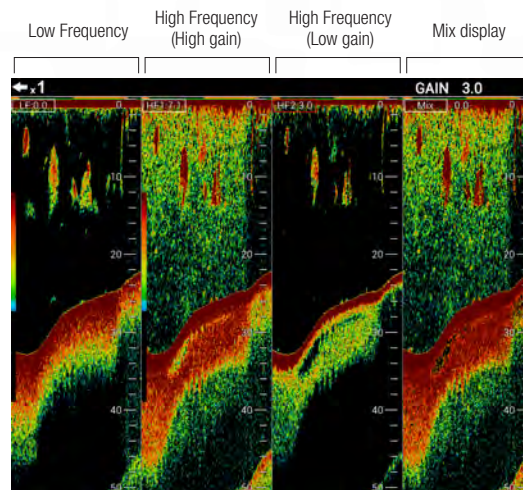
Now you can capture screenshots and video when dropping your net or when searching for fish. Captured screenshots and video display position\* and time of capture, for simple review. Improve your fishing by comparing fish finder echoes with your resulting catches.

\*GPS input required. \*Feature coming soon.



## Simultaneous gain setting for increased visibility

Display two different gain settings simultaneously for increased visibility in changing water conditions and when changing vessel speed.



## FURUNO Free Synthesizer transceiver for adjustable operating frequency

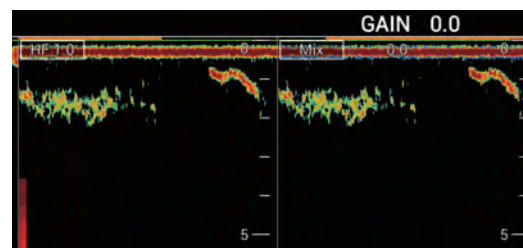
Retrofitting is made easy. With FFS technology, you can easily replace an FCV-1200L processor unit while utilizing the same transducer for convenient installation.

## Improved control unit for simple and intuitive operation

The control unit features a water resistant touch pad that works even when wearing rubber gloves. You can use the touch pad for setting up VRM and TLL in an instant.

## Zero Line Rejection

Observe clear echoes from just 3 meters below your vessel with Zero Line Rejection, allowing you to better analyze the water column from near to far.



## Upgrade to FCV-1900B Hi-Res Fish Finder or FCV-1900G Fish size indicator

By purchasing and installing a software license, you can upgrade your FCV-1900 model to a FCV-1900B Hi-Res Fish Finder\* or a FCV-1900G Fish Size Indicator\*, both utilizing the latest TruEcho CHIRP™ technology. FCV-1900G offers a precise fish size histogram for accurate estimation of fish size and density of schools of fish. With fish size histogram, targets can be properly evaluated, spelling increased efficiency and profitability. For further details, please contact your local FURUNO national distributor.

\*TruEcho CHIRP™ compatible transducer required.



SPECIFICATIONS

1. GENERAL

1.1 Transmmiting frequency

1.2 Output power

1.3 Transmmiting rate

1.4 Transmmiting mode

1.5 Pulselength

1.6 External monitor (required specifications)

Display resolution
- 15 kHz to 200 kHz, Free-synthesize

1, 2 or 3 kW rms

10 to 2700 pulse/min

(5 to 3000 m range, normal mode)

Standard mode only

0.05 to 5 ms

XGA (1024x768), SXGA (1280x1024),  
FHD(1920x1080)  
SXGA (1024x1280)
2. PROCESSOR UNIT

2.1 Color indication

Echo color

Back color

2.2 Hue

2.3 Echo display mode

2.4 Zoom display

2.5 Depth range

2.6 Range shift

2.7 Expansion range

2.8 Display advanced speed

2.9 Data recording

2.10 Language
- 8, 16 or 64 colors according to echo intensity

Select from 5 colors

7 steps (standard, Hue 1 to 5, customized)

Single mode (high/low frequency), Dual-frequency,  
Zoom, User 1/2

User 1/2 available to use mixture, multi-gain,  
telesounder and external sounder display

Bottom-lock expansion, Bottom zoom,  
Marker zoom, Discrimination zoom

5 to 3000 m

2000 m max.

2 to 200 m

6 steps (Lines/TX: Freeze, 1/4, 1/2, 1/1, 2/1, 4/1)

Echo display and measured data can be recorded in  
internal memory

Chinese, Danish, English, French, Japanese, Korean,  
Russian, Spanish, Norwegian
3. INTERFACE

3.1 Number of port

NMEA

LAN

CIF

Net sonde

Video signal

External KP

Temperature sensor

USB

3.2 Data sentences

Input

Output

3.3 Output proprietary sentences

PFEC
- 3 ports, NMEA V1.5/2.0/3.0

1 port, Ethernet 100Base-TX (HUB required)

1 port

1 port, (sonde marker/ sonde KP)

1 port, HDMI type-D

1 port

1 port

1 port, USB2.0

(specified monitor brilliance control available)

GGA, GLL, GNS, MTW, VHW, VTG, ZDA

DBS, DBT, DPT, MTW, TLL

SDbcd, SDflg, SDmrk, pidat
4. POWER SUPPLY

4.1 Processor unit

Rectifier (RU-1746B-2, option)

AC/DC power supply unit
- 12-24 VDC: 8.3-3.9 A

100/110/115/220/230 VAC, 1 phase, 50/60 Hz

100-115/200-230 VAC, 1 phase, 50-60 Hz

(PR-240, option)
5. ENVIRONMENTAL CONDITIONS

5.1 Ambient temperature

5.2 Relative humidity

5.3 Degree of protection

5.4 Vibration
- 15°C to +55°C

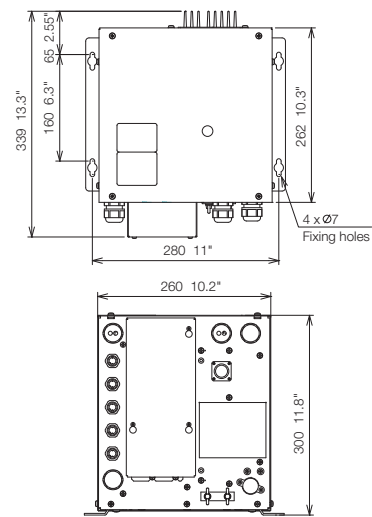
95% or less at +40°C

IP22

IEC 60945 Ed.4

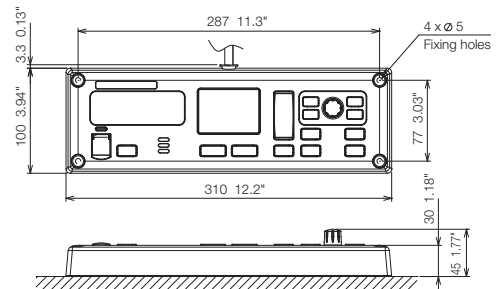
Processor Unit

FCV-1901  
10.2 kg 22.5 lb

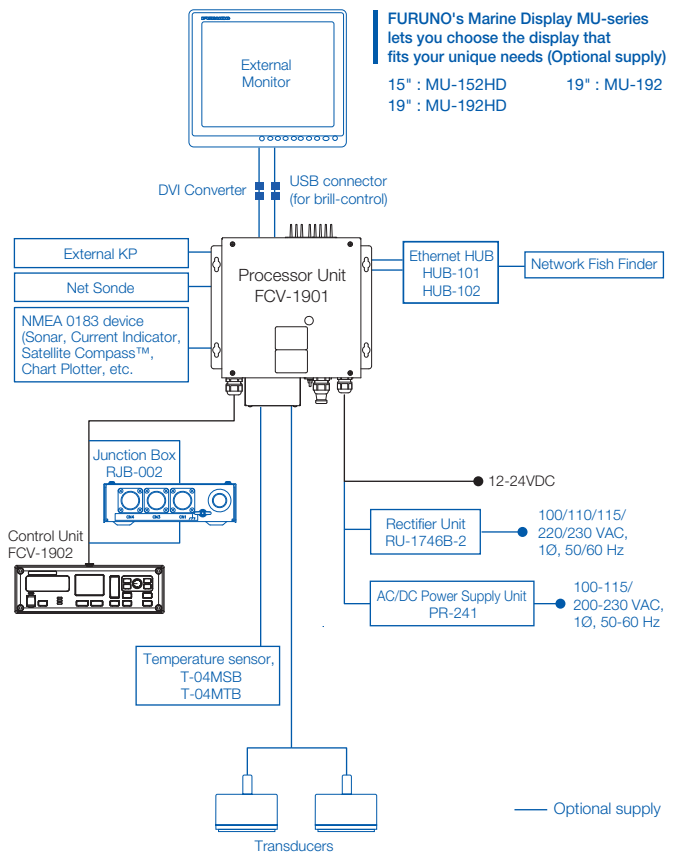


Control Unit

FCV-1902  
1.1 kg 2.4 lb



Interconnection Diagram



Beware of similar products

All brand and product names are registered trademarks, trademarks or service marks of their respective holders.

SPECIFICATIONS SUBJECT TO CHANGE WITHOUT NOTICE

FURUNO ELECTRIC CO., LTD.  
www.furuno.com

Find your local contact point

