

FURUNO

5.7" COLOR LCD FISH FINDER

Model **FCV-689**

*Compact and lightweight design to fit any boat.
This simple, yet powerful Fish Finder increases
productivity with reliable performance!*



Auto Tuning
(Sensitivity)



FURUNO Digital
Filter



Bottom
Discrimination



ACCU-FISH

Non-CE Marking

www.furuno.com

Packed with reliable Furuno technology for crystal clear

Equipped with Furuno's award-winning technology:

- **ACCU-FISH™**
- **Bottom Discrimination**
* Thru-hull or transom transducer mount required
- **Color Expansion** - Expands echo colors to easily identify fish from seabed
- **Scroll back mode** to view historical fish echoes
- **Picture advance speed** selectable from [x8] to [1/16]
- **Brightness** of 1,000 cd/m² (max.) and 0.3 cd/m² or less (min.) for comfortable viewing
- **Intuitive control panel and user-friendly interface**
 - Furuno's TLL (Target Lat/Lon) output allows you to interface the FCV-689 with your chart plotter so that you can mark fishing spots with various information (L/L, Depth, Water Temp, Fish size, Bottom).

* Required connection to chart plotter.



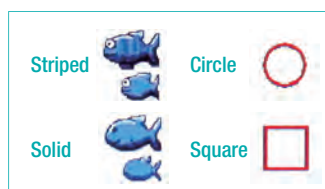
ACCU-FISH™

ACCU-FISH



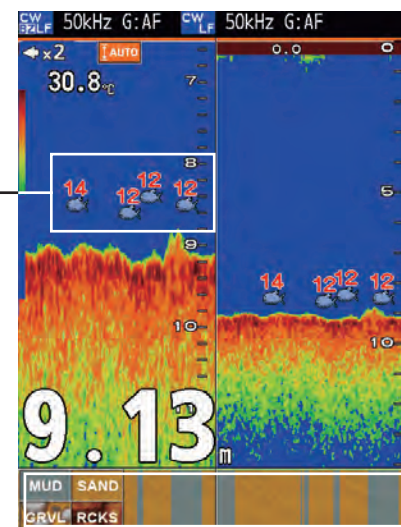
DETECT FISH SIZE WITH ACCU-FISH™

ACCU-FISH™ is a revolutionary fish size assessment function that can tell you the approximate size of the fish under your boat. It can detect the fish size of 10 to 199 cm, in the depth of 2 to 100 m.



Fish mark is selectable from two types of fish symbols, circle and square. The fish symbol, displayed in two different sizes (Large: over 50 cm, Small: 10 to 49 cm), is a great help for anglers to identify fish targets. Circle and square identify targets without hiding the fish echo.

In some instances, fish size indicated on the FCV-689 may differ from its actual size. Please carefully read the Operator's Manual prior to utilizing this feature.



Bottom Discrimination

AT-A-GLANCE RECOGNITION OF BOTTOM COMPOSITION

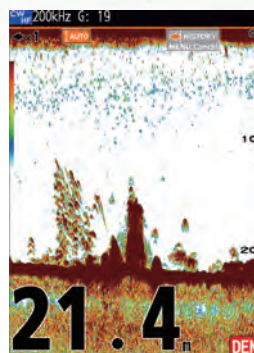
The FCV-689's Bottom Discrimination feature enables the fish finder to indicate if a major component of the bottom is mud, sand, gravel or rock. The Function provides you with valuable information to locate rich fishing grounds, while boosting your catch of the day.

echo images to help boost your catch!

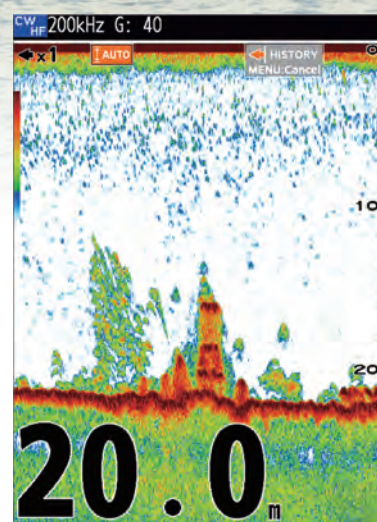


Color Expansion

With Color Expansion, the range of identifiable echoes is expanded so you can intuitively identify bottom fish from the seabed. Reefs, structure, and fish near the seabed are shown in slightly separated colors, making it easy to tell structure from fish at a glance.



Expansion OFF



Expansion ON

Scrolling Back

Press the right or left keys on the control panel to scroll backward and forward through the echo image history. You can scroll through three full screens of echoes - a very useful feature for when you want to see a school of fish that has passed by.



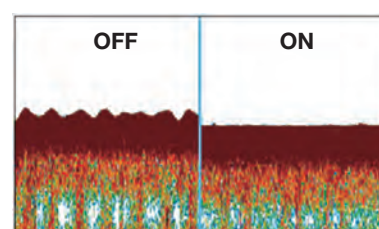
HEAVE CORRECTION with SATELLITE COMPASS™

The "Heave Correction" function has been a must-have feature with Furuno's commercial fish finders – but now this useful feature is available with the compact stand-alone FCV-689.

The unprecedented quad-antenna design of the Satellite compass™ (Model name: SCX-21) makes it capable of calculating accurate heave information.



Satellite compass™
SCX-21
(Sold separately)



Heave Correction

SPECIFICATIONS OF FCV-689

GENERAL

Frequency	50 and 200 kHz
Output power	600 W
TX rate	Max. 3,000 pulse/min
Pulse length	0.04 to 3.0 ms

FISH FINDER

Screen size	5.7" color LCD, 640 x 480 (VGA)
Brilliance	1,000 cd/m ² typical
Display	Single frequency, Dual-frequency, Zoom, Nav data 2/3/4, A-scope
Expansion mode	Bottom lock, Bottom zoom, Marker zoom
Basic range	2-1200 m*
Shift	0-1200 m*
	*m, ft, fm, HR, pb can be selected in the menu
Display color	Echo color: 8/16/64 Palette: White/Blue/Black/Green/Yellow
Picture advance speed	9 steps (Lines/TX: x8, x4, x2, x1, 1/2, 1/4, 1/8, 1/16, or stop)
Function settings	Heave correction*, Bottom discrimination, ACCU-FISH™ *Satellite Compass required

INTERFACE

Number of ports	1 port NMEA0183 V1.5/2.0/3.0/4.0/4.1
Data sentences	(Input) BWC, GGA, GLL, GNS, HDG, HDT, MDA, MTW, MWV, RMA, RMB, RMC, THS, VHW, VTG, XTE, ZDA (Output) DBS, DBT, DPT, MTW*, RMB*, VHW*, TLL* by key operation * External data required.

POWER SUPPLY

12-24 VDC: 1.0 - 0.5 A

ENVIRONMENT

Temperature	-15°C to +55°C
Relative humidity	93% or less at +40°C
Waterproofing	IPX6
Vibration	IEC 60945 Ed.4

EQUIPMENT LIST

Standard

1. Display Unit FCV-689 (with hard cover)
2. Installation Materials and Standard Spare Parts

Option

1. Inner Hull Mounting Kit
2. Flush Mounting Kit
3. Extension Cable 10 m, for transducer (10 pin)
4. Cable Assembly Converter cable (10 pin - 10 pin, 6 pin), for ST sensor/water temp sensor, 0.2 m
5. Cable Assembly 2 m, for display unit connection
6. Transducer (See Transducer list)

TRANSDUCER (OPTION)

Transducer
520-5PSD*
520-5MSD*
520-PLD*
525-5PWD*
525T-PWD*
525T-BSD*
525T-LTD/12*
525T-LTD/20*
SS60-SLTD/12*
SS60-SLTD/20*

Transducer (Speed/Temp)

525STID-PWD*
525STID-MSD*

Speed/Temp sensor (ST sensor)

ST950-FJ46-1
ST950-FJ46-2

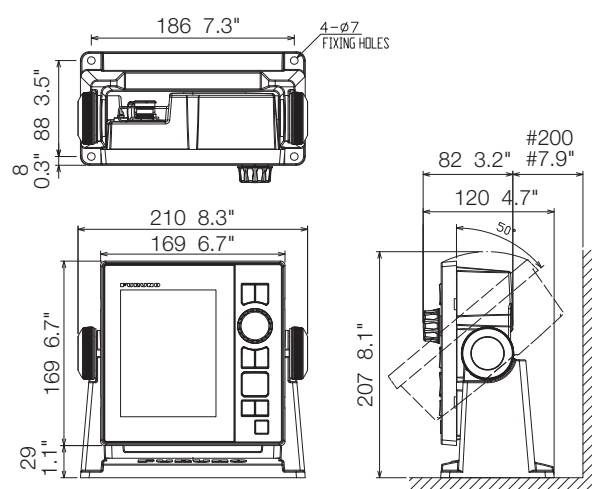
Water Temp sensor

T-04MSB
T-04MTB

*: Compatible with ACCU-FISH™ and Bottom Discrimination functions.

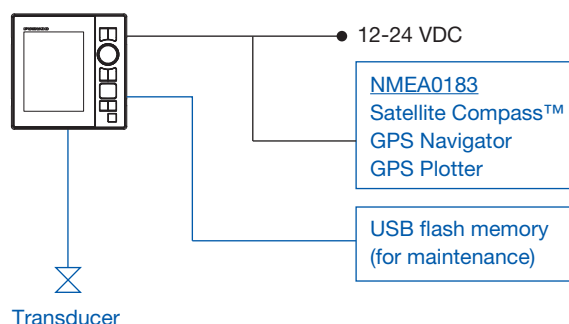
DISPLAY UNIT

Bracket Mount 1.1 kg 2.4 lb



#: Service clearance

INTERCONNECTION DIAGRAM



— Option or local supply

Beware of similar products

All brand and product names are registered trademarks, trademarks or service marks of their respective holders.

SPECIFICATIONS SUBJECT TO CHANGE WITHOUT NOTICE

FURUNO ELECTRIC CO., LTD.

www.furuno.com

Find your local contact point



A-2506LB
Catalogue No. CA000002696