

FURUNO

FISH SIZE INDICATOR

Model

FCV-2100-MARK-2

(Product Name: FISH FINDER)

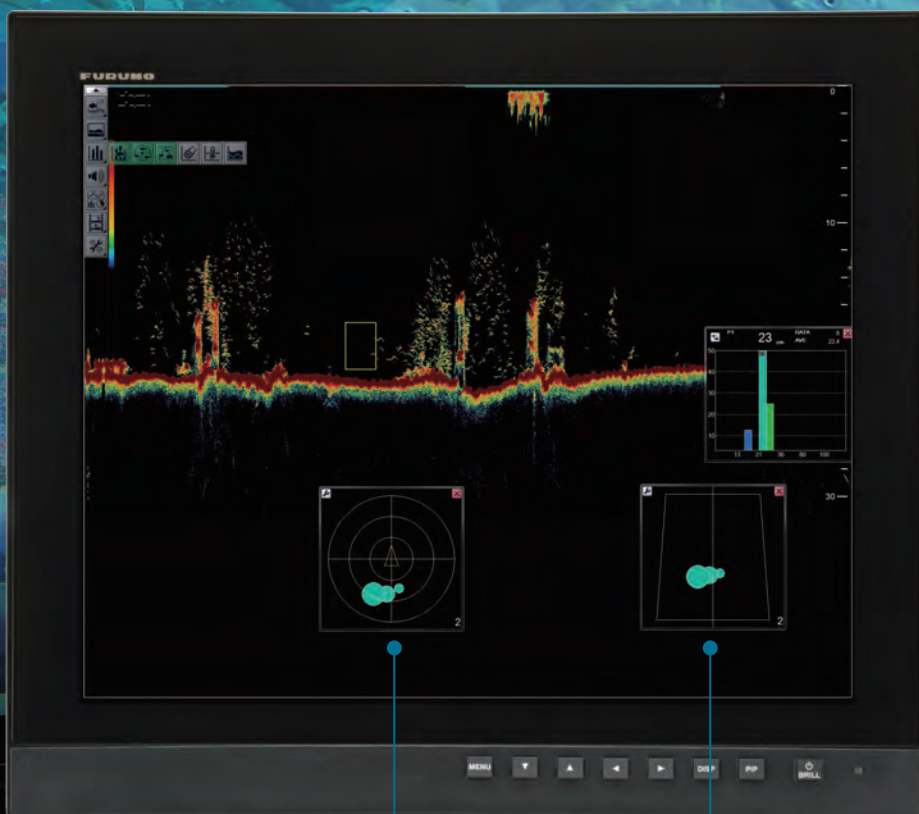


www.furuno.com

By combining Split Beam technology with FURUNO's TruEcho CHIRP™, we have simultaneously improved fish size measurement accuracy and achieved higher-resolution target images. This makes it easier to discern fish outlines in order to detect fish size in densely packed schools within the mid-surface layer zone, or to discriminate single fish near the seabed.

FISH DISTRIBUTION

The fish distribution display shows the position and movement of the fish target. Fish echoes from the last three scans are displayed. The color of the circle indicates strength of individual fish echo, which helps to track schools.



Vertical target graph

Horizontal target graph

Photo: 19" Marine Display MU-192HD
(Local Supply)

FISH SIZE INDICATOR

Model **FCV-2100-MARK-2**

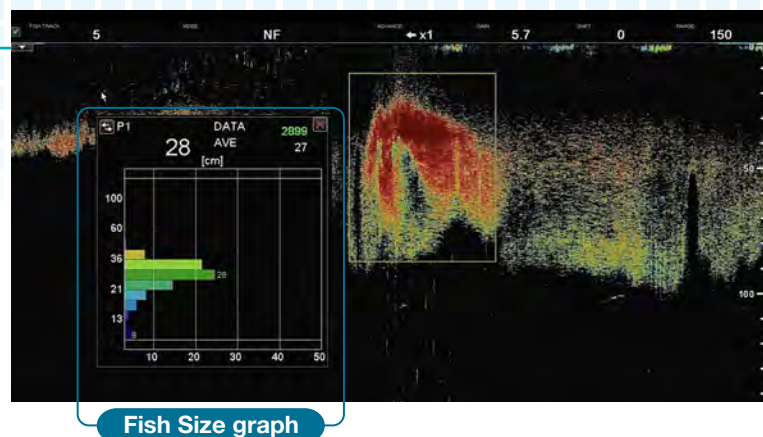
Experience a higher level of accuracy and clearer target images to make the most of your time fishing!

- Combining Split Beam and TruEcho CHIRP™ -

Display remarkably accurate fish size measurements in easy-to-understand graph form*

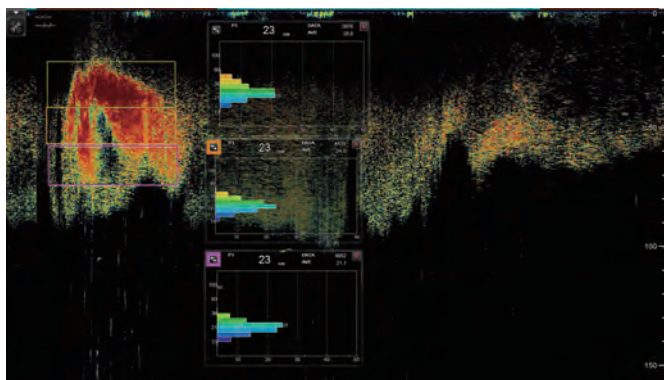
The FCV-2100-MARK-2 measures the size and distribution of fish in the selected school, and displays this information in a graph that can be understood at a glance. TruEcho CHIRP™ technology has improved the accuracy and reliability of fish size measurements and graphs.

* Fish size is a reference value calculated from reflection intensity.

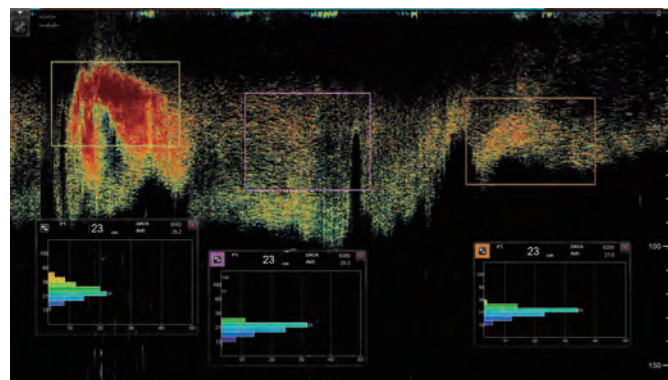


Simultaneously displays fish size measurements in three specific areas

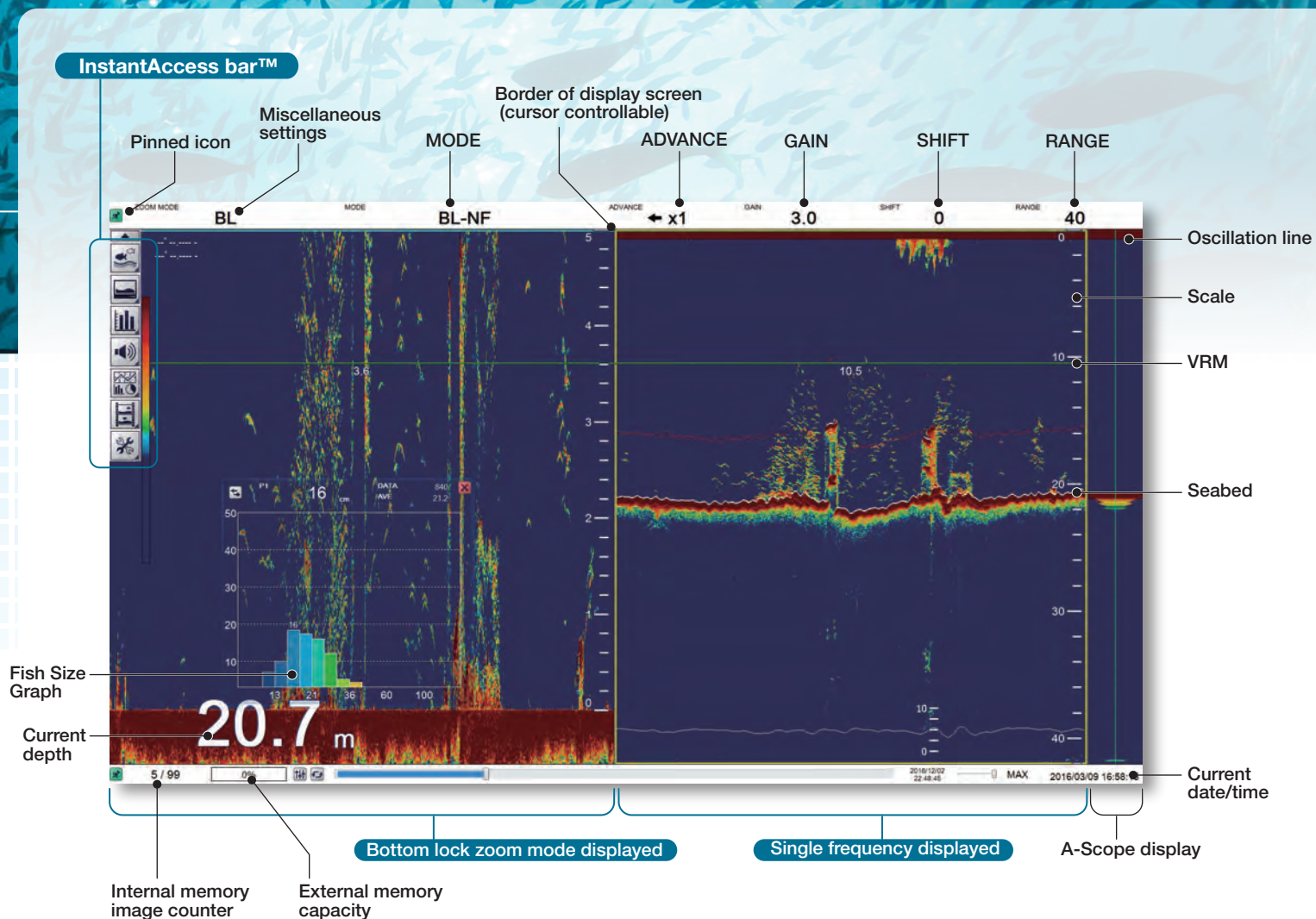
The FCV-2100-MARK-2 can measure and display fish sizes in three locations at the same time. This allows you to compare and analyze fish size and school composition, which makes for more efficient fishing, such as aiming for fish of a particular size.



Example of fish size graphs showing sardines at different school densities



Example of fish size graphs of sardines over time



Simple operation with trackball and InstantAccess bar™

The FCV-2100-MARK-2 can be operated easily and quickly with its trackball. The screen header also contains Range, Shift, Sensitivity, Image Feed, and Display Mode menus that can be immediately accessed when required. Other functions can also be accessed immediately by setting them in the InstantAccess bar™ as desired*.

* Up to 10 functions can be set in the InstantAccess bar™



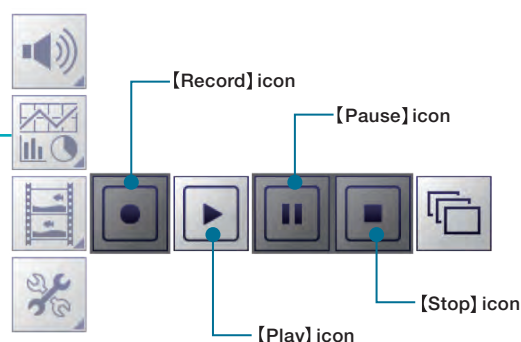
Trackball Control unit



Echo data can be recorded and played back

A maximum of 99 still images can be saved on the processor unit. The maximum number that can be saved externally depends on the capacity of the external recording medium*. Echo data can also be saved to an external medium with a capacity of 500 GB or more*.

* Local Supply





■ Checking past images with the convenient scroll-back mode

By scrolling the screen back, you can review past images. A very useful feature for when you want to see a school of fish that has passed by.

■ Makes your fishing operation more efficient

By identifying the approximate size of the targeted fish beforehand, the FCV-2100-MARK-2 enables selective fishing, making fishing operations more efficient.

■ Connect to High-Power DFF3-UHD Network Fish Finder* for greater depths

Up to three echo images at different frequencies can be displayed in one screen.

The differences in responses for each fish species are clearly visible at a glance, which helps in identifying and estimating the species.

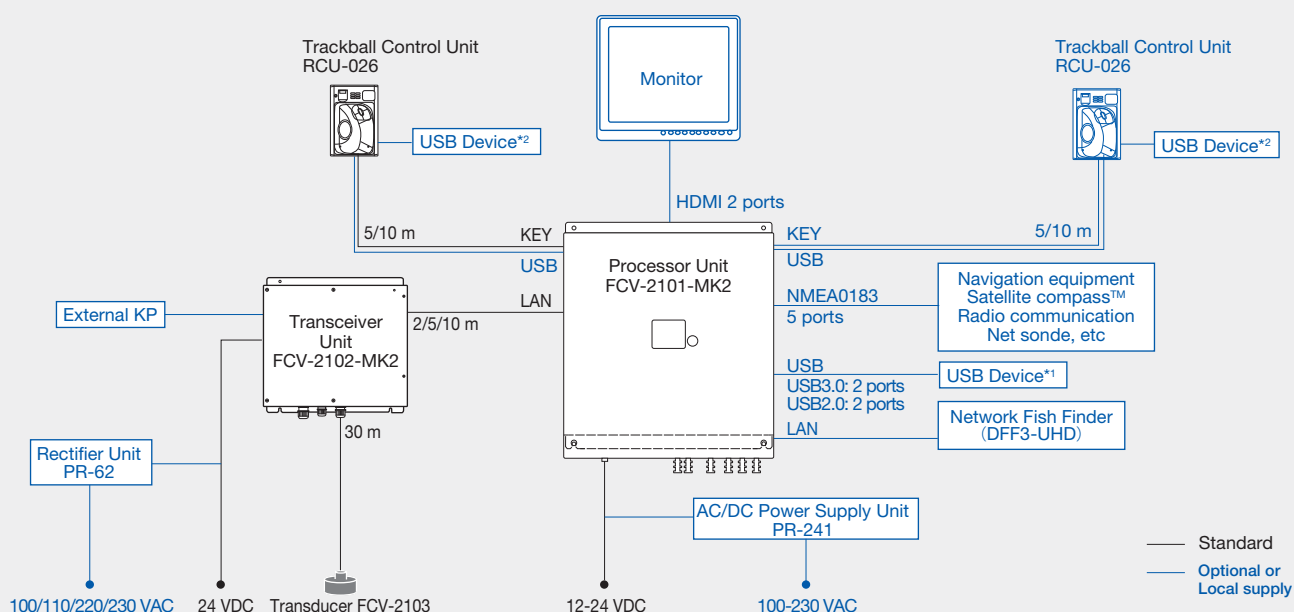
* DFF3-UHD network Capitalize Fish Finder are sold separately. DFF3-UHD operating at 2kW or 3kW for detecting fish in deeper water. Only one can be connected.

■ Stable searching with heave correction function*

The heave correction function enables the ability to show you an unwavering presentation of the seabed, without undulations caused by sea conditions.

* Requires connection to Satellite Compass™.

INTERCONNECTION DIAGRAM



*1 Up to 4 USB device incl. RCU-026 can be connected.

*2 USB cable is required to connect the processor from RCU-026

FISH SIZE INDICATOR

Model **FCV-2100-MARK-2**

SPECIFICATIONS

1. GENERAL

Transmitting frequency	100 kHz nominal
Output power	1 kW, FM transmission
Transmitting rate	800 pulse/min or less
Pulse length	0.04 ms

2. PROCESSOR UNIT

Color indication	64 colors (16 colors setting available)
Hue	8 steps (Standard, Hue1 to 6, customized)
Echo display mode	Single mode, Zoom, External sounder display
Zoom display	Bottom-lock expansion, Bottom zoom, Marker zoom, Discrimination zoom
Fish size measurement	Histogram
Depth range	10 to 800 m
Range shift	800 m max.
Expansion range	2 to 200 m
Display advance speed	7 steps (Lines/TX: Freeze, 1/4, 1/2, 1/1, 2/1, 4/1, 8/1)
Data recording	Echo pictures and raw data can be recorded (The raw data recording requires external memory)
Language	English, French, Japanese, Norwegian, Spanish

3. INTERFACE

Number of port	2 ports (Type A)
HDMI	XGA (1024×768), SXGA (1280×1024), Full HD (1920×1080), UXGA (1600×1200), WUXGA (1920×1200)
NMEA	5 ports, NMEA0183 V1.5/2.0/3.0
KEY	2 port, RS-485, For control unit
LAN	2 ports(for transceiver unit, external sounder /maintenance), Ethernet, 100Base-TX
USB	4 ports, USB2.0: 2 ports, USB3.0: 2 ports
External KP control	1 port
NMEA0183 data sentences	Input: GGA, GLL, GNS, MTW, VHW, VTG, ZDA Output: DBS, DBT, DPT, MTW, TLL
Output proprietary sentences	PFEC: SDbhr, SDes1, SDes2, SDesd, SDflg, SDmrk, pidat

4. POWER SUPPLY

Transceiver unit	24 VDC, 1.6 A
Processor unit	12-24 VDC, 4.0-2.0 A
Rectifier unit (PR-62, option)	100/110/220/230 VAC, 1 phase, 50/60 Hz
AC/DC Converter (PR-241, option)	100-230 VAC, 1 phase, 50/60 Hz

5. ENVIRONMENTAL CONDITIONS

Ambient temperature	Transceiver unit: -15°C to +55°C (storage: -30°C to +70°C) Processor/Trackball control unit: -15°C to +55°C
Relative humidity	Processor/Transceiver unit: IP22 Trackball control unit: IP22 (IPX0:USB cover opened)
Degree of protection	95 % or less at +40°C
Vibration	IEC60945 Ed.4

EQUIPMENT LIST

Standard

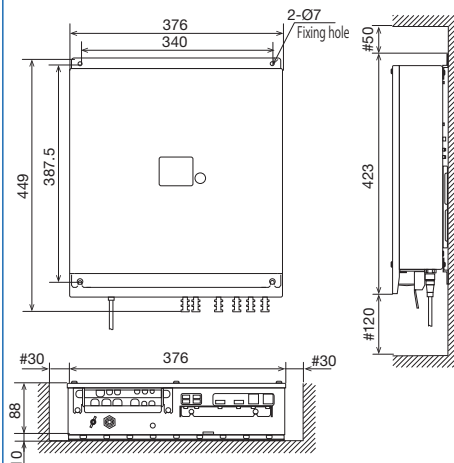
1. Processor unit FCV-2101-MK2
2. Trackball control unit RCU-026 with 5 m cable
3. Transceiver unit FCV-2102-MK2
4. Transducer FCV-2103 with 30 m cable
5. Spare parts, Installation materials

Option

Rectifier Unit PR-62, AC/DC Power Supply Unit PR-241, HDMI/DVI Cable, LAN Cable, Flush mount kit for trackball control unit OP24-27, Ferrite core, Installation materials

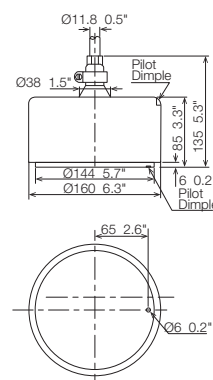
PROCESSOR UNIT

FCV-2101-MK2
8.0 kg 17.6 lb



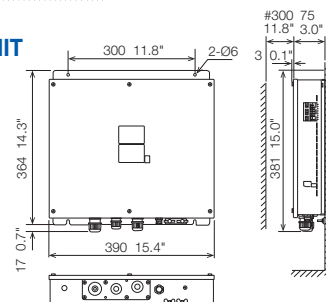
TRANSDUCER

FCV-2103
7.0 kg 15.4 lb



TRANSCIVER UNIT

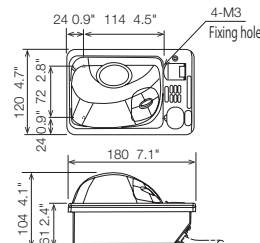
FCV-2102-MK2
5.2 kg 11.5 lb



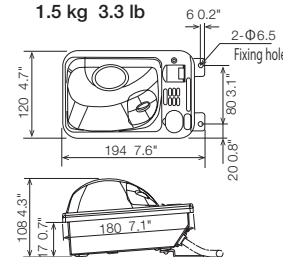
TRACKBALL CONTROL UNIT

RCU-026

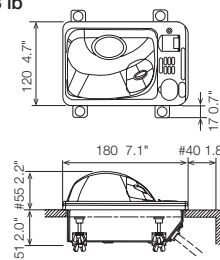
Desktop type
1.4 kg 3.1 lb



Built-in type
1.5 kg 3.3 lb



Flush mount type
1.5 kg 3.3 lb



Beware of similar products

The brand, product names, trademarks, registered trademarks, or service marks mentioned in this document belong to their respective holders.

SPECIFICATIONS SUBJECT TO CHANGE WITHOUT NOTICE

FURUNO ELECTRIC CO., LTD.

www.furuno.com

Find your local contact point



A-2507LB
Catalogue No. CA000002717