

Specifications

Type	Desktop fully automated random access analyzer	
Usage	General chemistry as photometric assay Immunology as photometric assay (Latex reagents available)	
Assay type	End point, 2point end, Single kinetic, Double kinetic and ISE	
Through put	400 tests/hour (Up to 560 tests/hour with ISE)	
Incubation time	10 minutes (R1: 5min, R2: 5min for 2 reagent assay)	
Sample type	Serum, Plasma and Urine	
Sample supply	Type:	Removable tray with sample tube holder on a turntable
	Capacity:	72 positions for samples (handling of STAT available) 20 positions for controls and standards
Sample dispensing	Pipette:	Micro-pipette with liquid level detector
	Type:	Micro syringe
	Volume:	2.0 to 35.0µl (increment by 0.1 µl)
Reagent supply	Type:	Removable tray with reagent bottle holder on a turntable (Equipped with Reagent Barcode Reader)
	Capacity:	60 positions (30 positions each for 70ml and 20ml bottles)
	Inventory:	Calculation of remaining reagent volume
	Cooling:	Peltier element (8 to 15 degrees Celsius)
Reagent dispensing	Pipette:	2 pipettors (for R1 and R2 respectively) Micro-pipette with liquid level detector
	Type:	Micro syringe
	R1 Volume:	20 to 350µl (increment by 1 µl)
Cuvette	R2 Volume:	20 to 250µl (increment by 1 µl)
	Number of cuvettes:	90 cuvettes
Reaction system	Type:	Reusable glass cuvettes with onboard washing system
	Reaction volume:	150 to 450µl
	Temperature:	37 degrees Celsius
Detector	Type:	Direct heating system
	Method:	Direct measurement of absorbance in cuvette Bi-chromatic or Mono-chromatic
	Wavelength:	340, 380, 415, 450, 510, 546, 570, 600, 660, 700, 750, 800 (nm)
	Light source:	Halogen tungsten lamp
Stirring system	Type:	Stick type rotating stirrer
Dimensions	970mm (W) x 690mm (D) x 580mm (H) (Analyzer only)	
Weight	Approx. 150kg	
Power consumption	900VA or lower	
Water Consumption	18L/hour	
Option	On board ISE module, External tank liquid level sensors, Sample Barcode Reader, clot detector for sampling pipette	

"All brand and product names are registered trademarks, trademarks or service marks of their respective holders."

SPECIFICATIONS SUBJECT TO CHANGE WITHOUT NOTICE
PLEASE READ MANUAL BEFORE USING THE UNIT

Model CA-270



Fit for small to medium size laboratory. Fully automated random access bench top clinical analyzer with throughput of 450 tests per hour including ISE.

Model CA-90



Compact analyzer fit for small size laboratory or for specific test such as TDM/DOA. Random access clinical analyzer with a throughput of 156 tests per hour including ISE.

FURUNO ELECTRIC CO., LTD.

SYSTEM PRODUCTS DIVISION
2-20 Nishinomiya, Nishinomiya City, Hyogo. 662-0934, Japan
Phone: +81-798-33-7500 Fax: +81-798-33-7506

Model CA-400

Fully Automated Chemistry Analyzer

High Quality
Compact
Versatile

THE ANSWER TO YOUR LABORATORY NEEDS



FURUNO

High Quality middle-sized analyzer in a compact body!

User Friendly Interface

Intuitive GUI provides fast and simple operation for any level of operator.

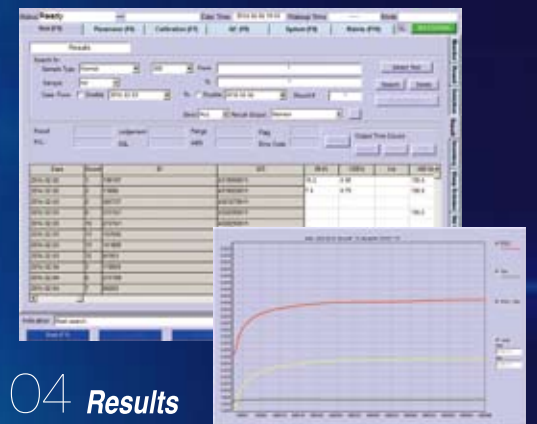
Key Features:

- High operability with easy-to-understand layout
- Effective use of informative graphics and charts
- Comprehensive assessment of analyzer condition



03 Calibration

Manages calibration settings and calibration curves on one screen.

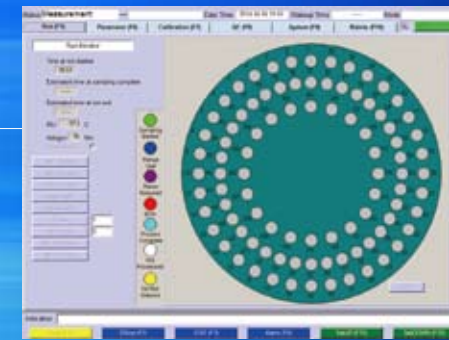


04 Results

Results can be displayed, printed out, or saved as electronic files.

01 Run-Monitor

Visually shows sample status.



02 Quality Control (QC)

Displays QC results in various formats.



1 Highly-stable Refrigerated Reagent Tray

Removable carousel for easy loading, 60 cooled positions to enhance reagent stability.

2 Highly-precise Reagent Pipetting System

2 pipetes for R1 and R2.
Low reagent volume.
R1: 20 to 350 µl. R2: 20 to 250 µl.
Liquid level & clash detection.

3 Automatic Washing System

Effective cleaning method minimizes carry over and contamination.



4 Highly-precise Sample Pipetting System

Low sample volume of just 2.0 µl(min).
Capable of processing various sample types.
Liquid level, clot & clash detection.

6 Multi-function Sample Tray

72 positions for samples + 20 positions for controls and standards. Capable of holding primary tubes, sample cups and pediatric cups.

8 Integrated ISE Unit (optional)

Measurement of K, Na and Cl.
Throughput of 240 tests/hour.

5 Low Reaction Volume Cuvettes

Efficient use of reagent with minimum reaction volume of 150 µl.



7 Variable Speed Stirring System.

Easily applicable for latex reagents by 5-step speed control



Stable and Highly precise measurement results.

STAT Sampling

Dedicated loading port enables fast and easy process of emergency samples.

Sample Clot Detection (optional)

3 sensitivity levels of clot detection system ensure precise sample pipetting.

Automatic Start-up

Analyzer will be always ready for use by running system preparation automatically.

Connectivity

Capable of connecting bidirectionally to LIMS system via ASTM standard.

Automatic Cuvette Check

Cuvettes are thoroughly checked before test to ensure accurate results.

Automatic Rerun

Automatic rerun function enables a true "walk-away" system.