





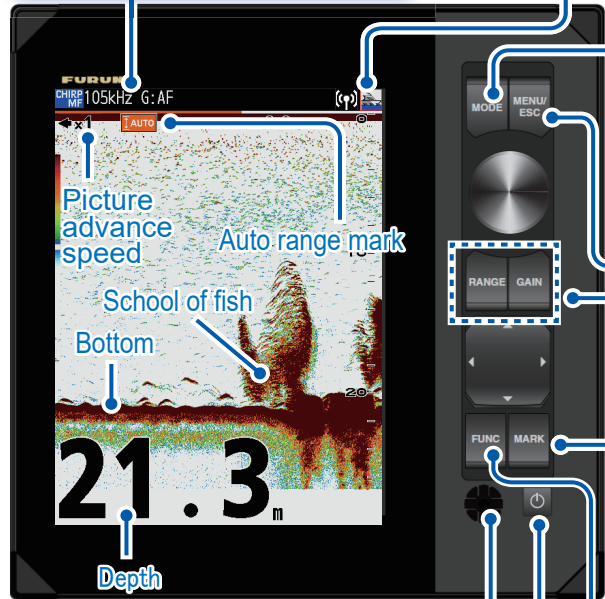


Alarm Icons

-  : Fish alarm
-  : Voltage alarm (High)
-  : Speed alarm
-  : Voltage alarm (Low)
-  : Wireless LAN (Use FCV unit as access point)
-  : Wireless LAN (Use existing access point)

Display mode, frequency, sensitivity mode/value



How to select display mode

MODE → [MODE] → MODE

MODE	
Mode1:	CHIRP (H)
Mode2:	CHIRP (L)
Mode3:	CHIRP (L) / CHIRP (H)
Mode4:	BL / CHIRP (H)
Mode5:	BL / CHIRP (L)
Mode6:	NAV4 / CHIRP (H)
Mode7:	NAV2 / CHIRP (L)

Displayed at the top of the screen:
 CHIRP: CHIRP Transducer, CW: CW Transducer
 HF: High freq. MF: Medium freq. LF: Low freq.
 BL: Bottom Lock, BZ: Bottom Zoom
 MZ: Marker Zoom

Opens/Closes the menu

How to register waypoint

(Navigation connection required)

MARK → [MARK] → MARK → [MENU/ESC]

Move the cross-cursor to the position to be registered

How to use FUNCTION key

How to open the registered setting window

FUNC → Short press → [Pic. Advance]

Pic. Advance	
x4	
x2	
x1	
1/2	
1/4	
1/8	
1/16	
Stop	

Default state

Rotate to select setting value → Press

How to register an item for instant display

FUNC → Long press → [FUNC Key]

FUNC Key	
Pic. Advance	
Range Shift	
Interference	
Clutter	
Color Erase	
White Line	
Marker	
MPT List	
Bottom Zone	
Zoom Range	
BL Range	
ACCU-FISH	
CHIRP Preset	

Rotate to select the item → Press

How to choose a range

(Disabled when using the bottom discrimination function.)

RANGE → [RANGE] → Range

Range	
Auto	Manual
15ft	
30ft	
60ft	
120ft	
200ft	
400ft	
600ft	
1000ft	

Select mode → Auto / Manual → Press → Range is automatically changed.

How to adjust the gain

GAIN → [GAIN] → Auto Gain

Auto Gain	
Off	
Fishing	
Cruising	
Offset 0	
Min	Max

Select mode → Fishing / Cruising / Off → Press → Gain is automatically adjusted.

Adjust

Displayed at the top of the screen:
 G: 0 - 100 (Auto Gain: Off)
 G: AF (Auto Gain: Fishing)
 G: AC (Auto Gain: Cruising)

How to adjust the brilliance/panel dimmer

BRILL → Short press → Brilliance/Panel Dimmer

Brilliance/Panel Dimmer	
Brilliance : 9	
Panel Dimmer : 5	
Mode : Day	

Brilliance → Panel Dimmer → Adjust

(Long press: Turn off the power)